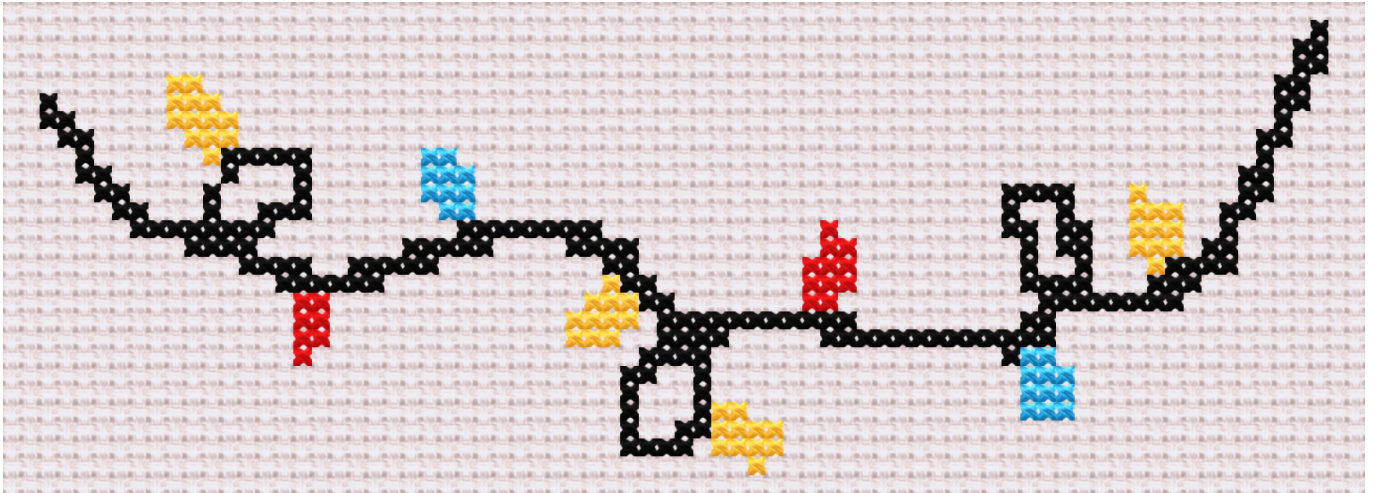


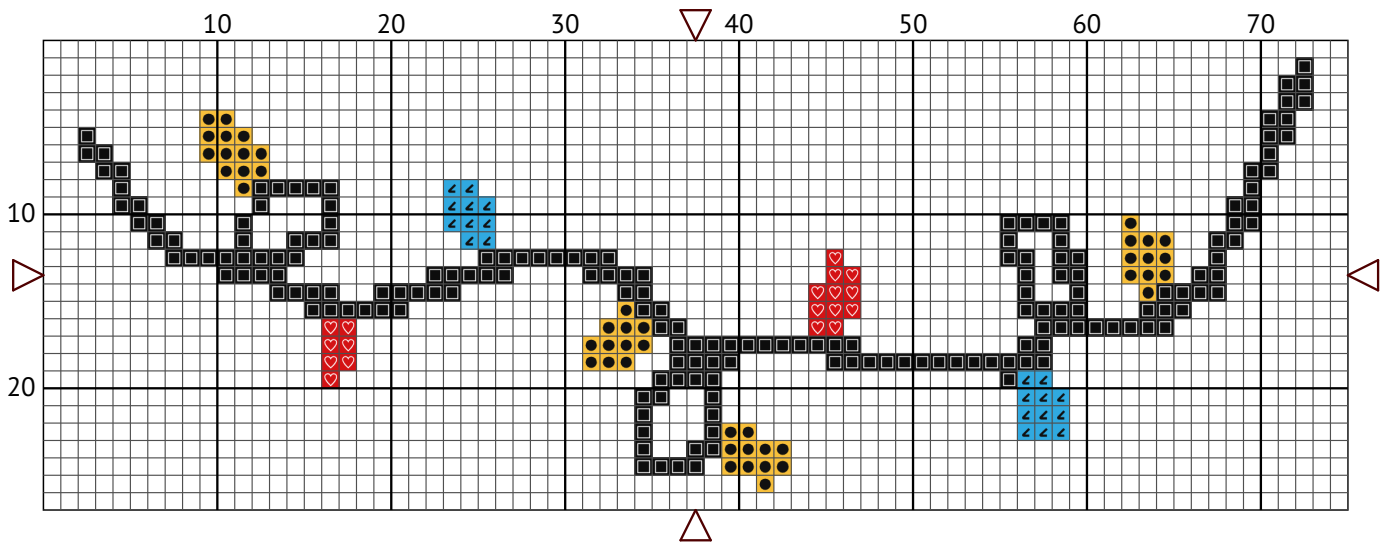
# Christmas Lights

Cross stitch chart











Design size: 75 x 27 stitches

# Christmas Lights



Christmas Lights  
Floss list for crosses

Use 2 strands of thread for cross stitch

N	Symbol	Number	Name	Stitches
1	 	DMC 310	Black	180
2	 	DMC 743	Yellow - Medium	46
3	 	DMC 817	Coral Red - Very Dark	18
4	 	DMC 3846	Bright Turquoise - Light	21