

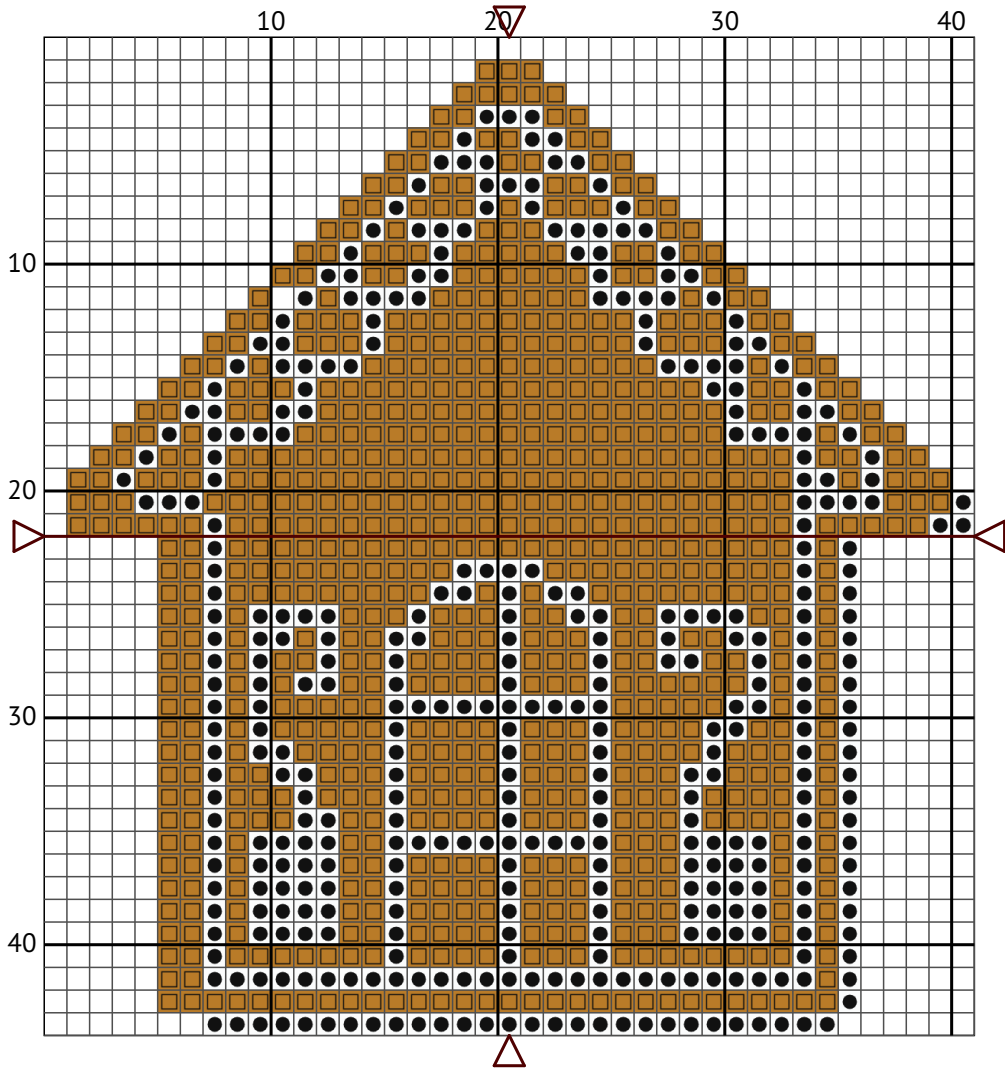
# Gingerbread Hoose

Cross stitch chart



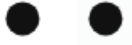

Design size: 41 x 44 stitches

# Gingerbread House



Gingerbread House  
Floss list for crosses

Use 2 strands of thread for cross stitch

N	Symbol	Number	Name	Stitches
1		DMC B5200	Snow White	382
2		DMC 729	Old Gold - Medium	775